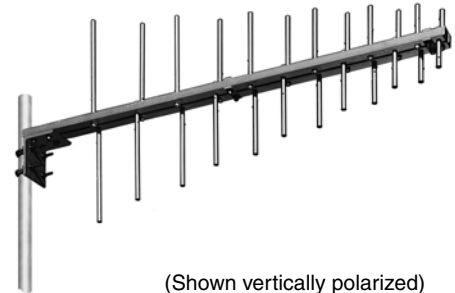


The Kathrein Scala Division CL7-300 broadband log-periodic antenna is intended for use in professional fixed-station applications in the 225–400 MHz band. It features:

- Heavy-duty construction.
- Anodized 6061-T6 aluminum elements.
- Easy element replacement if necessary.
- Double boom of 6061-T6 rectangular aluminum tube.
- High front-to-back and front-to-side ratios without minor lobes.



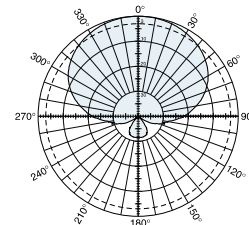
(Shown vertically polarized)

**Specifications:**

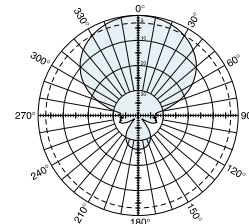
Frequency range	225–400 MHz
Gain	9.5 dBi
Impedance	50 ohms
VSWR	<1.5:1
Polarization	Horizontal or vertical
Front-to-back ratio	>25 dB
Maximum input power	250 watts (at 50°)
H-plane beamwidth	80 degrees (half-power)
E-plane beamwidth	58 degrees (half-power)
Connector	N female
Weight	17 lb (7.7 kg)
Dimensions	62.1 x 28 inches (1577 x 711 mm)
Equivalent flat plate area	1.5 ft <sup>2</sup> (0.14 m <sup>2</sup> )
Wind survival rating*	100 mph (160 kph)
Shipping dimensions	64 x 11 x 6 inches (1626 x 279 x 152 mm)
Shipping weight	21 lb (9.5 kg)
Mounting	For masts of 2.375 inches (60 mm) OD.

See reverse for order information.

\* Mechanical design is based on environmental conditions as stipulated in EIA-222-F (June 1996) and/or ETS 300 019-1-4 which include the static mechanical load imposed on an antenna by wind at maximum velocity. See the Engineering Section of the catalog for further details.



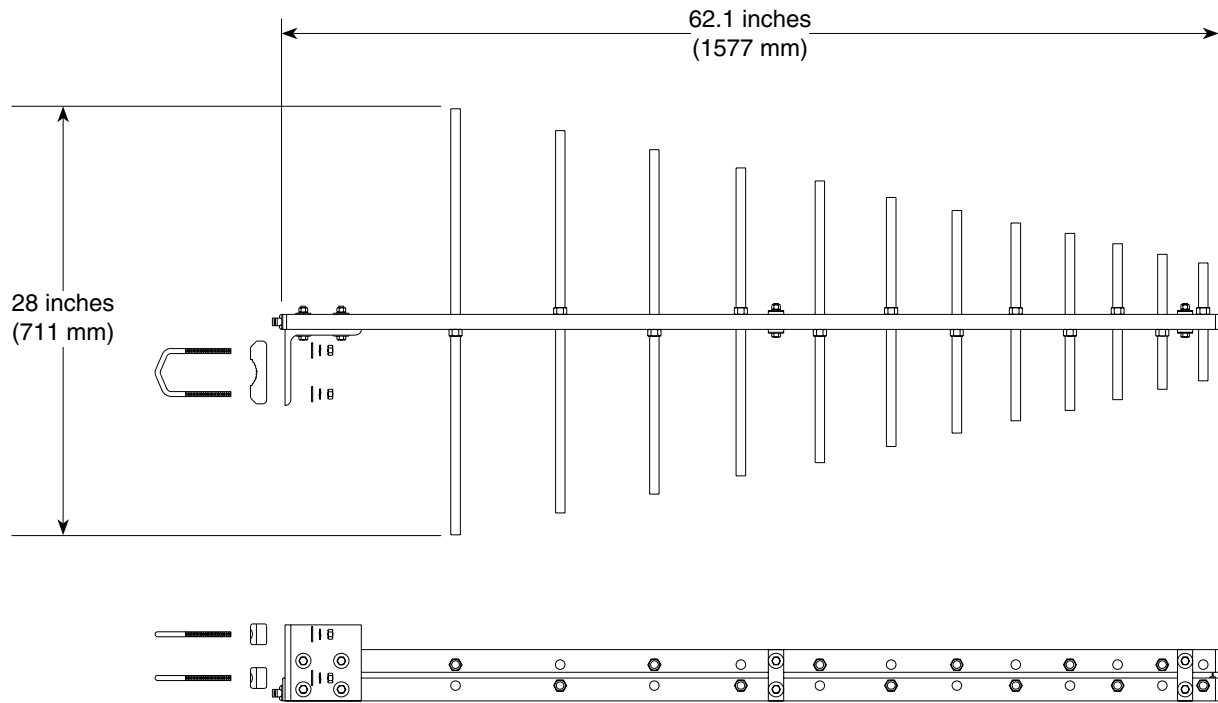
H-plane  
Horizontal pattern – V-polarization  
Vertical pattern – H-polarization



E-plane  
Horizontal pattern – H-polarization  
Vertical pattern – V-polarization



10153-B



(Shown horizontally polarized)

**Order Information:**

Model	Description
CL7-300N	225–400 MHz Log Periodic antenna

All specifications are subject to change without notice. The latest specifications are available at [www.kathrein-scala.com](http://www.kathrein-scala.com).

Kathrein Inc., Scala Division Post Office Box 4580 Medford, OR 97501 (USA) Phone: (541) 779-6500 Fax: (541) 779-3991  
 Email: [communications@kathrein.com](mailto:communications@kathrein.com) Internet: [www.kathrein-scala.com](http://www.kathrein-scala.com)