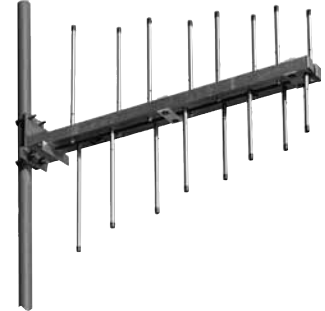


The Kathrein Scala Division CL7-150 broadband log periodic antenna is intended for use in professional fixed-station applications in the 147–174 MHz band. It features:

- Heavy-duty construction.
- Anodized, double-laminated heavy wall 6061-T6 aluminum tubing elements.
- Easy element replacement.
- Double-boom of two-inch 6061-T6 square aluminum tube.
- High front-to-back and front-to-side ratios, without minor lobes.
- Excellent performance, even in icing conditions.



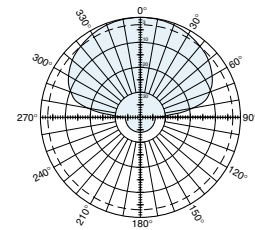
(Shown vertically polarized)

**Specifications:**

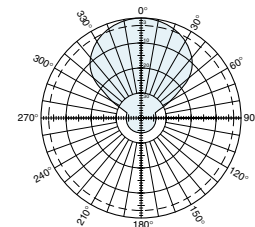
Frequency range	147–174 MHz
Gain	9.3 dBi
Impedance	50 ohms
VSWR	<1.5:1
Polarization	Horizontal or vertical
Front-to-back ratio	>25 dB
Maximum input power	250 watts (at 50°C)
H-plane beamwidth	82 degrees (half-power)
E-plane beamwidth	48 degrees (half-power)
Connector	N female
Weight	25 lb (11.4 kg)
Dimensions	53.3 x 40.3 inches (maximum) (1353 x 1022 mm)
Wind load at 100 mph (160 kph)	
Front	63 lbf (279 N)
Wind survival rating*	120 mph (200 kph)
Shipping dimensions	59 x 9 x 8 inches (1499 x 229 x 203 mm)
Shipping weight	30 lb (13.6 kg)
Mounting	For masts of 2.375 inches (60 mm) OD.
<b>CL7-150/HCM</b>	Horizontal center-mount
<b>CL7-150/URM</b>	Horizontal or vertical rear-mount

See reverse for order information.

\* Mechanical design is based on environmental conditions as stipulated in TIA-222-G-2 (December 2009) and/or ETS 300 019-1-4 which include the static mechanical load imposed on an antenna by wind at maximum velocity. See the Engineering Section of the catalog for further details.



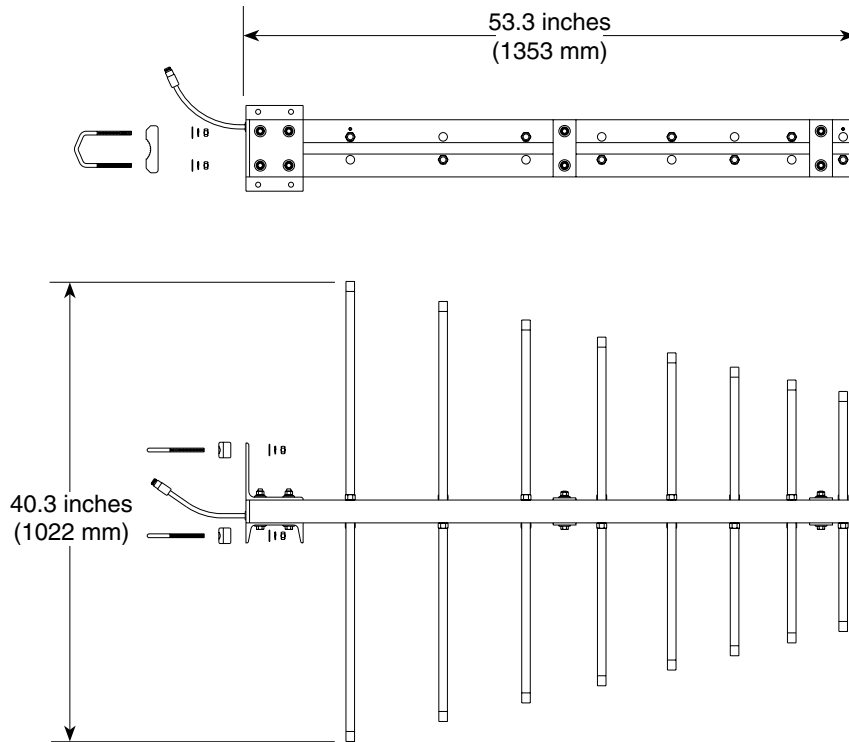
**H-plane**  
Horizontal pattern – V-polarization  
Vertical pattern – H-polarization



**E-plane**  
Horizontal pattern – H-polarization  
Vertical pattern – V-polarization



10239-D



(Shown vertically polarized)

**Order Information:**

Model	Description
CL7-150/HCM	Horizontal center-mount antenna
CL7-150/URM	Horizontal or vertical rear-mount antenna

All specifications are subject to change without notice. The latest specifications are available at [www.kathrein-scala.com](http://www.kathrein-scala.com).