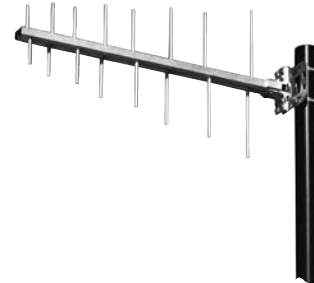


The Kathrein Scala CL6-440 is a broadband log-periodic antenna designed for professional fixed station applications in the 380–512 MHz band. It features very flat frequency response and low VSWR.

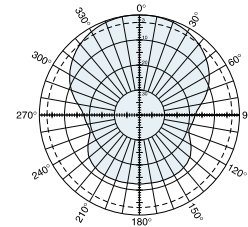
Conservative mechanical and electrical design, and the use of carefully selected materials result in high levels of performance and reliability in even the most severe environments.

Specifications:

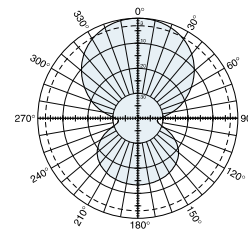
Frequency range	380–512 MHz (broadband)
Gain	8.5 dBi
Impedance	50 ohms
VSWR	<1.5:1
Polarization	Horizontal or vertical
Front-to-back ratio	>15 dB
Maximum input power	50 watts
H-plane beamwidth	80 degrees (half-power)
E-plane beamwidth	55 degrees (half-power)
Connector	N female or TNC male
Weight	3.8 lb (1.7 kg)
Dimensions	29 x 16 x 6 inches (737 x 406 x 152 mm)
Equivalent flat plate area	1.34 ft ² (0.125 m ²)
Wind survival rating*	120 mph (200 kph)
Shipping dimensions	32 x 16 x 5 inches (813 x 406 x 127 mm)
Shipping weight	7 lb (3.2 kg)
Mounting	For masts of 1.75 to 2.75 inch (45 to 70 mm) OD.



(Shown vertically polarized)



H-plane
Horizontal pattern – V-polarization
Vertical pattern – H-polarization

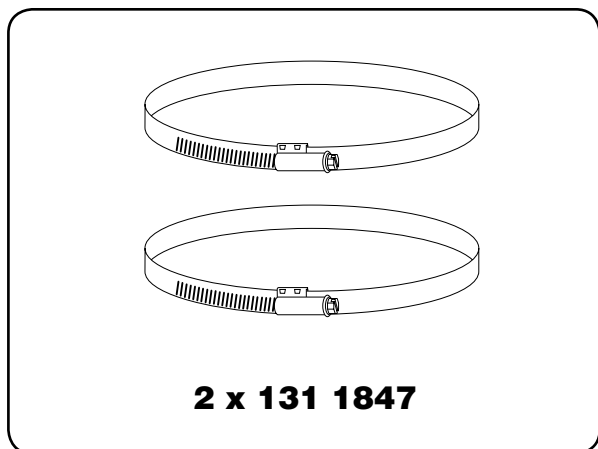


E-plane
Horizontal pattern – H-polarization
Vertical pattern – V-polarization

* Mechanical design is based on environmental conditions as stipulated in EIA-222-F (June 1996) and/or ETS 300 019-1-4 which include the static mechanical load imposed on an antenna by wind at maximum velocity. See the Engineering Section of the catalog for further details.

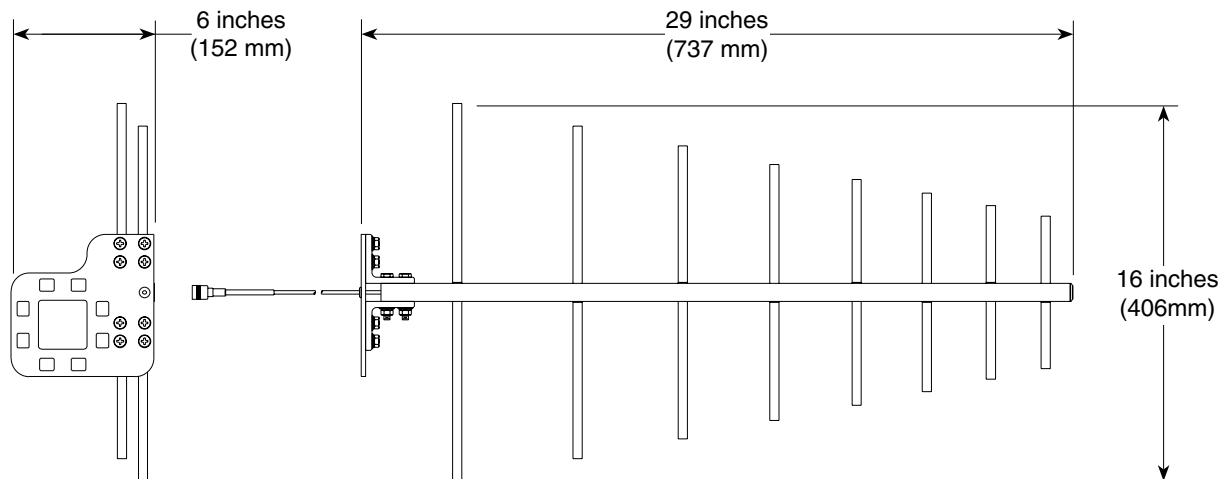


10572-B



Mounting Options:

2 x 131 1847	Mounting for 1.75 to 2.75 inch (45 to 70 mm) OD mast.
--------------	--



Order Information:

Model	
CL6-440N	Antenna with N female connector
CL6-440T	Antenna with TNC male connector

All specifications are subject to change without notice. The latest specifications are available at www.kathrein-scala.com.

Kathrein Inc., Scala Division Post Office Box 4580 Medford, OR 97501 (USA) Phone: (541) 779-6500 Fax: (541) 779-3991
Email: communications@kathrein.com Internet: www.kathrein-scala.com