

# CL-FMRX

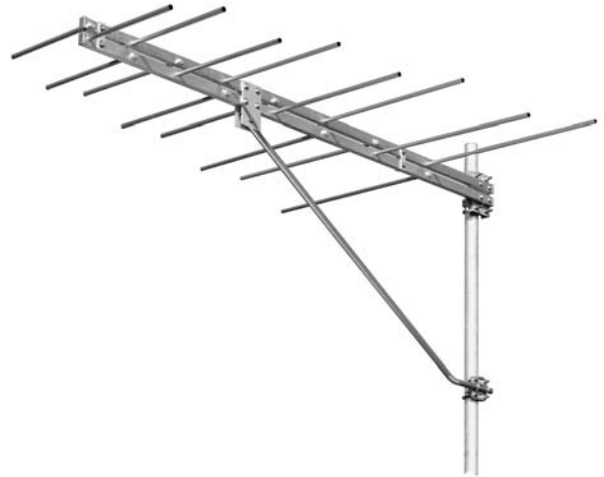
## FM LOG-PERIODIC RECEIVE ANTENNA

6.5 dBd gain  
88–108 MHz

The Kathrein Scala Division CL-FMRX is a ruggedly built log-periodic antenna, designed for professional FM receive applications.

Like all Kathrein Scala Division antennas, the CL-FMRX is made of the finest materials using state of the art electrical and mechanical designs, resulting in superior performance and long service life.

The CL-FMRX may be used stand-alone or in stacked arrays for higher gain, increased side-lobe suppression, or custom azimuth patterns.

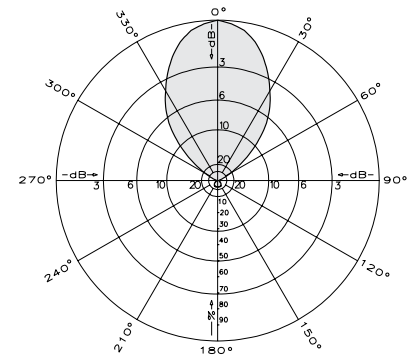


### Specifications:

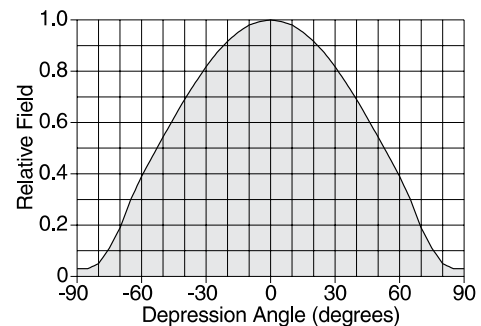
Frequency range	88–108 MHz (broadband)
Gain	6.5 dBd
Impedance	50 or 75 ohms
VSWR	< 1.5:1
Polarization	Horizontal or vertical
Front-to-back ratio	>25 dB
Azimuth pattern	52 degrees (half-power) horizontal polarization
Elevation pattern	78 degrees (half-power) horizontal polarization
Connector	Female 50Ω N or 75Ω N
Weight	18 lb (8.2 kg)
Dimensions	94.6 x 66.4 inches (2402 x 1686 mm)
Equivalent flat plate area	
<b>CL-FMRX/HCM</b>	2.98 ft <sup>2</sup> (0.277 m <sup>2</sup> )
<b>CL-FMRX/HRM</b>	3.36 ft <sup>2</sup> (0.312 m <sup>2</sup> )
<b>CL-FMRX/VRM</b>	3.36 ft <sup>2</sup> (0.312 m <sup>2</sup> )
Wind survival rating*	120 mph (200 kph)
Shipping dimensions	104 x 11 x 6 inches (2642 x 280 x 153 mm)
Shipping weight	34 lb (15.4 kg)
Mounting	For masts of 2.375 inches (60 mm) OD.
<b>CL-FMRX/HCM</b>	Horizontal polarization center-mount
<b>CL-FMRX/HRM</b>	Horizontal polarization rear-mount
<b>CL-FMRX/VRM</b>	Vertical polarization rear-mount

See reverse for order information.

\*Mechanical design is based on environmental conditions as stipulated in EIA-222-F (June 1996) and/or ETS 300 019-1-4 which include the static mechanical load imposed on an antenna by wind at maximum velocity. See the Engineering Section of the catalog for further details.



**Azimuth pattern (E-plane)**



**Elevation pattern (H-plane)**

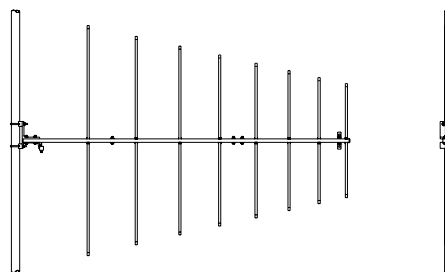
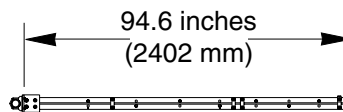
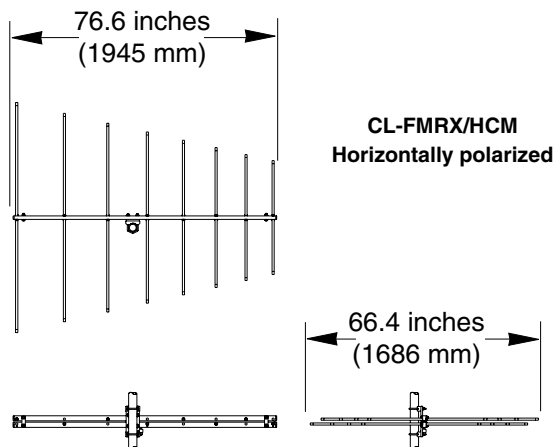


10493-C

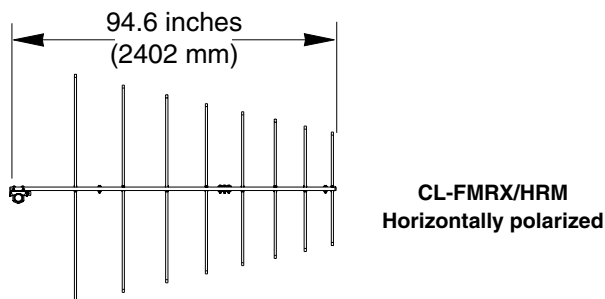
# CL-FMRX

## FM LOG-PERIODIC RECEIVE ANTENNA

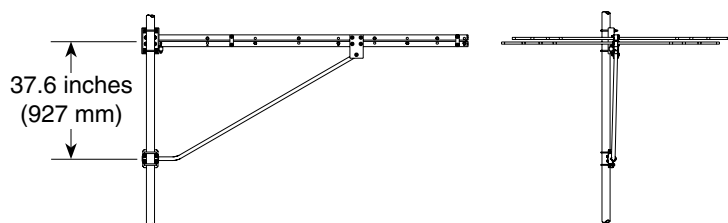
6.5 dBd gain  
88–108 MHz



CL-FMRX/VRM  
Vertically polarized



Vertically polarized antennas require lateral stabilization (not supplied) to prevent the antenna from turning on the mounting pipe.



### Order Information:

Model	Description
CL-FMRX/HCM/50N	Antenna with 50Ω N connector Horizontal polarization center-mount
CL-FMRX/HCM/75N	Antenna with 75Ω N connector Horizontal polarization center-mount
CL-FMRX/HRM/50N	Antenna with 50Ω N connector Horizontal polarization rear-mount

### Order Information:

Model	Description
CL-FMRX/HRM/75N	Antenna with 75Ω N connector Horizontal polarization rear-mount
CL-FMRX/VRM/50N	Antenna with 50Ω N connector Vertical polarization rear-mount
CL-FMRX/VRM/75N	Antenna with 75Ω N connector Vertical polarization rear-mount

All specifications are subject to change without notice. The latest specifications are available at [www.kathrein-scala.com](http://www.kathrein-scala.com).