

The Kathrein Scala Division CA5-300 five-element yagi antenna is intended for use in professional fixed-station applications in the 216–398 MHz band. It features:

- Balanced driven element for superior performance in icing conditions.
- Internal balun and dipole feedpoint sealed within the boom assembly.
- Heavy wall anodized aluminum pipe and tubing.
- Heavy aluminum castings and stainless steel hardware.
- Entire antenna at DC ground potential.

Specifications:

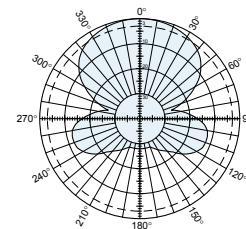
Frequency range	216–398 MHz (specify frequency)
Gain	12 dBi
Impedance	50 ohms
VSWR	<1.3:1
Polarization	Horizontal or vertical
Front-to-back ratio	>18 dB
Maximum input power	100 watts
H-plane beamwidth	70 degrees (half-power)
E-plane beamwidth	52 degrees (half-power)
Connector	N female
Weight	9 lb (4.1 kg) (maximum)
Dimensions	52.8 x 26.8 inches (maximum) (1341 x 681 mm)
Wind load Front	at 100 mph (160 kph) 63 lbf (279 N) (maximum)
Wind survival rating*	120 mph (200 kph)
Shipping dimensions	56 x 30 x 6 inches (maximum) (1422 x 762 x 152 mm)
Shipping weight	13 lb (5.9 kg)
Mounting	For masts of 2.375 inches (60 mm) OD.

* Mechanical design is based on environmental conditions as stipulated in TIA-222-G-2 (December 2009) and/or ETS 300 019-1-4 which include the static mechanical load imposed on an antenna by wind at maximum velocity. See the Engineering Section of the catalog for further details.

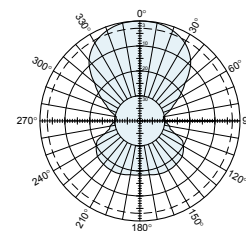
Contact Kathrein Kathrein Scala Division Division Customer Service for detailed order information.



(Shown vertically polarized)



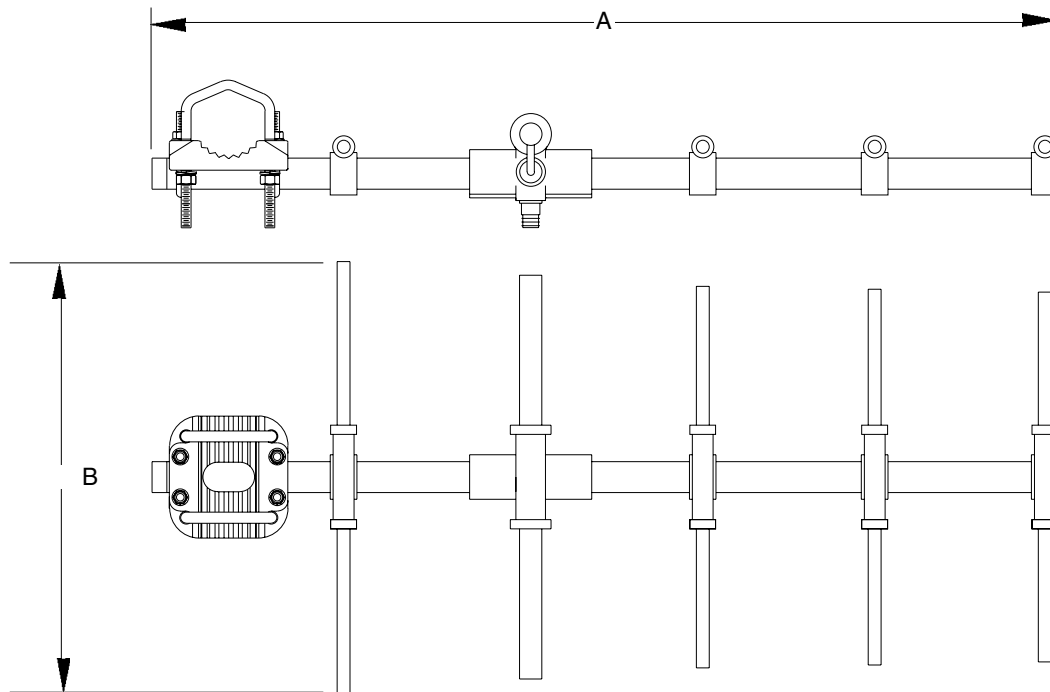
H-plane
Horizontal pattern – V-polarization
Vertical pattern – H-polarization



E-plane
Horizontal pattern – H-polarization
Vertical pattern – V-polarization



10104-C



(Shown vertically polarized)

Dimensions:		A	B
Frequency	216 MHz	52.8 inches (1341 mm)	26.8 inches (681 mm)
	398 MHz	31.8 inches (806 mm)	14.5 inches (367 mm)

Order Information:

Contact Kathrein Scala Division Customer Service for detailed order information.

All specifications are subject to change without notice. The latest specifications are available at www.kathrein-scala.com.

Kathrein Inc., Scala Division Post Office Box 4580 Medford, OR 97501 (USA) Phone: (541) 779-6500 Fax: (541) 779-3991
Email: communications@kathrein.com Internet: www.kathrein-scala.com