

The Kathrein Scala Division CA2-75/160 dipole reflector antenna is intended for use in professional fixed-station applications in the 72–76 MHz band. It features:

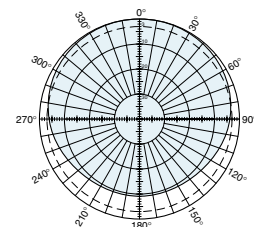
- Exclusive balanced feed system.
- One-piece driven element with internal balun.
- Seamless anodized 6061-T6 aluminum tubing and heavy-duty aluminum castings.
- Internal balun in cast aluminum housing is sealed against weather damage.
- Stainless steel hardware throughout.
- Entire antenna at DC ground potential.

Specifications:

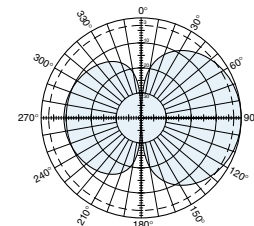
Frequency range	72–76 MHz (broadband)
Gain	6 dBi
Impedance	50 ohms
VSWR	<1.5:1
Polarization	Vertical
Front-to-back ratio	9.1 dB
Maximum input power	125 watts (at 50°C)
H-plane beamwidth	160 degrees (half-power)
E-plane beamwidth	72 degrees (half-power)
Connector	N female
Weight	6.5 lb (2.95 kg)
Dimensions	88 x 40 x 3 inches (2235 x 1016 x 76 mm)
Wind load	at 93 mph (150kph) 41 lbf (180 N)
Wind survival rating*	160 mph (260 kph)
Shipping dimensions	88 x 6 x 5 inches (2236 x 153 x 127 mm)
Shipping weight	15 lb (6.8 kg)
Mounting	For masts with O.D. of 2 to 2.375 inches (51 to 60 mm).

See reverse for order information.

* Mechanical design is based on environmental conditions as stipulated in TIA-222-G-2 (December 2009) and/or ETS 300 019-1-4 which include the static mechanical load imposed on an antenna by wind at maximum load imposed on an antenna by wind at maximum velocity. See the Engineering Section of the catalog for further details.



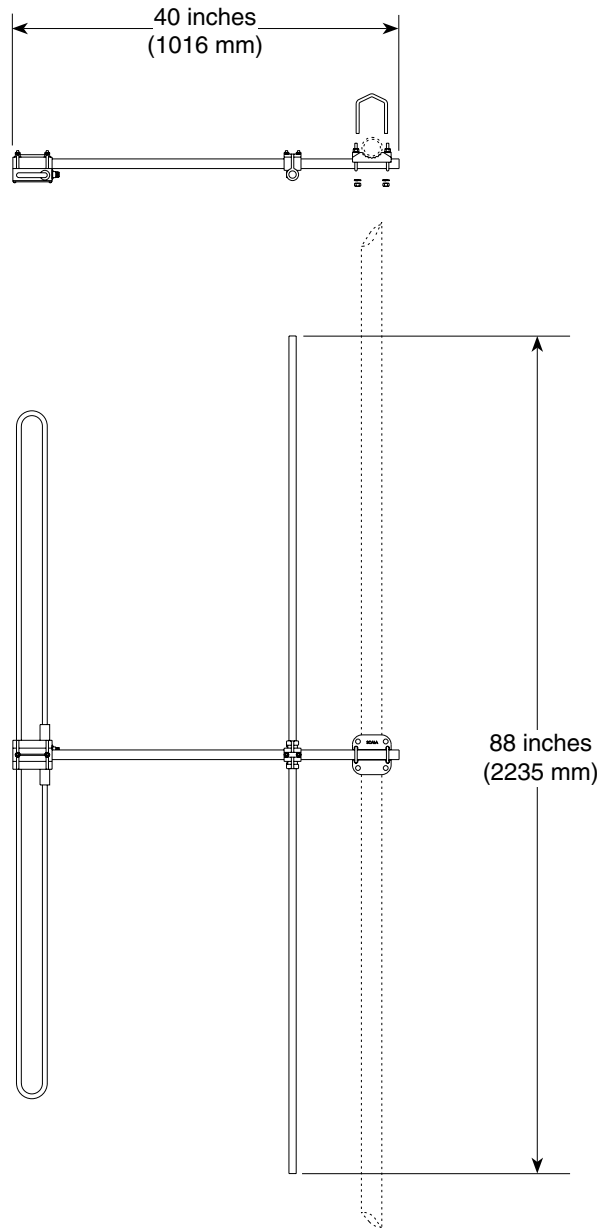
H-plane
Horizontal pattern – V-polarization



E-plane
Vertical pattern – V-polarization



10234-C



Order Information:

Model	Description
CA2-75/160N	72-76 MHz Dipole / Reflector antenna

All specifications are subject to change without notice. The latest specifications are available at www.kathrein-scala.com.

Kathrein Inc., Scala Division Post Office Box 4580 Medford, OR 97501 (USA) Phone: (541) 779-6500 Fax: (541) 779-3991
Email: communications@kathrein.com Internet: www.kathrein-scala.com