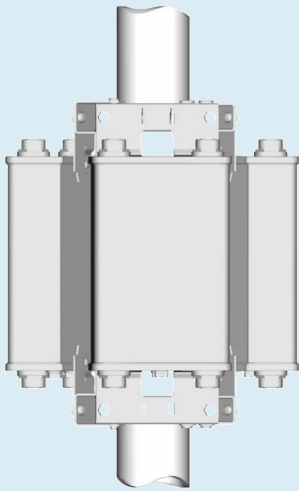


- Slim and unobtrusive design.
- Nearly cylindrical optical appearance with a small outer diameter.



Specifications:

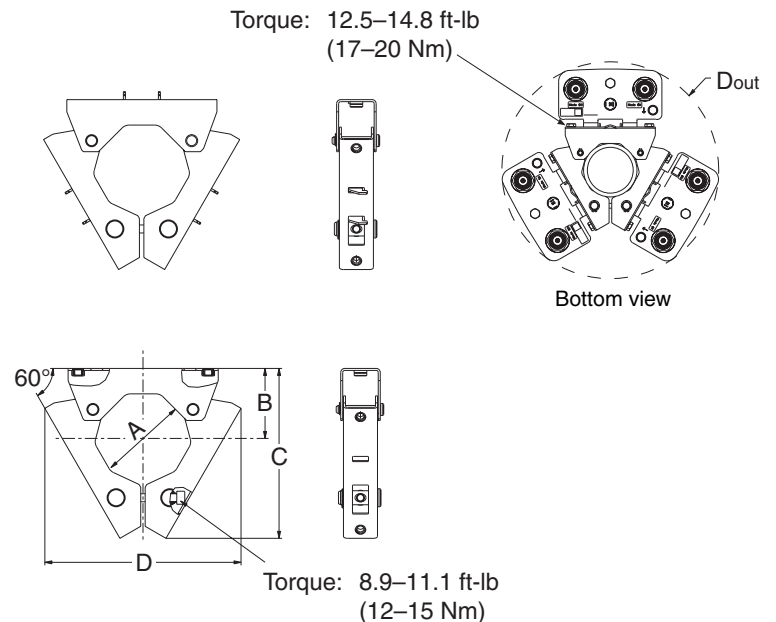
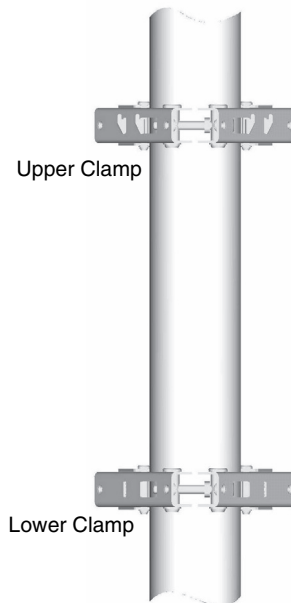
Angle between DTMA's	120°
Suitable for mast diameter*	
782 10347	3.5 inches (88.9 mm) OD.
782 10348	4.5 inches (114.3 mm) OD.
782 10349	5.5 inches (139.7 mm) OD.
Number of pieces	2 x 3 sector clamp
Materials	
3 sector clamp	Stainless steel
Fasteners	Stainless steel
Outer diameter (D _{out}) of the 3 DTMA Arrangement	
782 10347	14.2 inches (360 mm)
782 10348	15.4 inches (390 mm)
782 10349	16.3 inches (415 mm)
Weight (includes both upper and lower clamp)	
782 10347	4.2 lbs (1.9 kg)
782 10348	4.4 lbs (2 kg)
782 10349	5.3 lbs (2.4 kg)

Dimensions:

782 10347	A	B	C	D	D _{out}
inches	3.5	2.8	6.7	7.7	14.2
mm	88.9	70	170	196	360

782 10348	A	B	C	D	D _{out}
inches	4.5	3.3	7.5	8.6	15.4
mm	114.3	83	190	219	390

782 10349	A	B	C	D	D _{out}
inches	5.5	3.7	8.7	8.9	16.3
mm	139.7	95	221	225	415



Order Information:

Model	Description
782 10347	Three DTMA Sector Mounting Kit (120 deg. ea.) for 3.5 inch (88.9 mm) OD steel mast.
782 10348	Three DTMA Sector Mounting Kit (120 deg. ea.) for 4.5 inch (139.7 mm) OD steel mast.
782 10349	Three DTMA Sector Mounting Kit (120 deg. ea.) for 5.5 inch (139.7 mm) OD steel mast.