

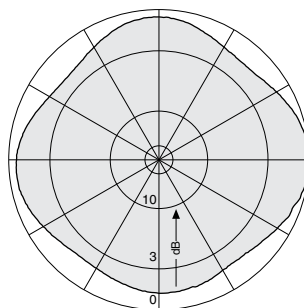
**750 10272**  
OMNIDIRECTIONAL ANTENNA  
7.5 dBd gain  
470–862 MHz  
Preliminary

**Specifications:**

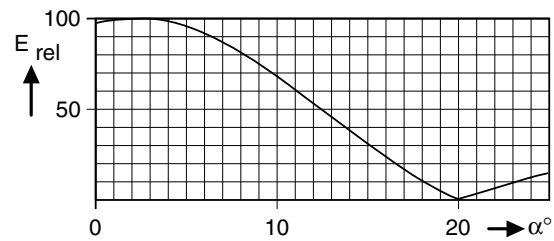
Frequency range	470–862 MHz
Gain	7.5 dBd
Impedance	50 ohms
VSWR	<1.2:1
Polarization	Horizontal
Maximum input power	1 Kw (at 40° C)
Azimuth pattern	Omni
Elevation pattern	15 degrees (half-power)
Electrical downtilt	2 degrees
Connector	7-16 DIN female
Weight	52.9 lb (24 kg)
Height	86.6 inches (2200 mm)
Radome diameter	9.1 inches (230 mm)
Wind load	at 100 mph (160 kph)
Front/Side/Rear	84 lbf (370 N)
Wind survival rating*	140 mph (225 kph)

\*Mechanical design is based on environmental conditions as stipulated in TIA-222-G-2 (December 2009) and/or ETS 300 019-1-4 which include the static mechanical load imposed on an antenna by wind at maximum velocity. See the Engineering Section of the catalog for further details.

- Material:** Omnidirectional antenna in protective fiberglass radome with a diameter of 230 mm.
- Radome color:** Light grey (RAL 7035).
- Flange:** Hot-dip galvanized steel.
- Attachment:** Onto a fitting counterflange or to tubular masts by using the steel adapter.
- Grounding:** Via mounting parts.



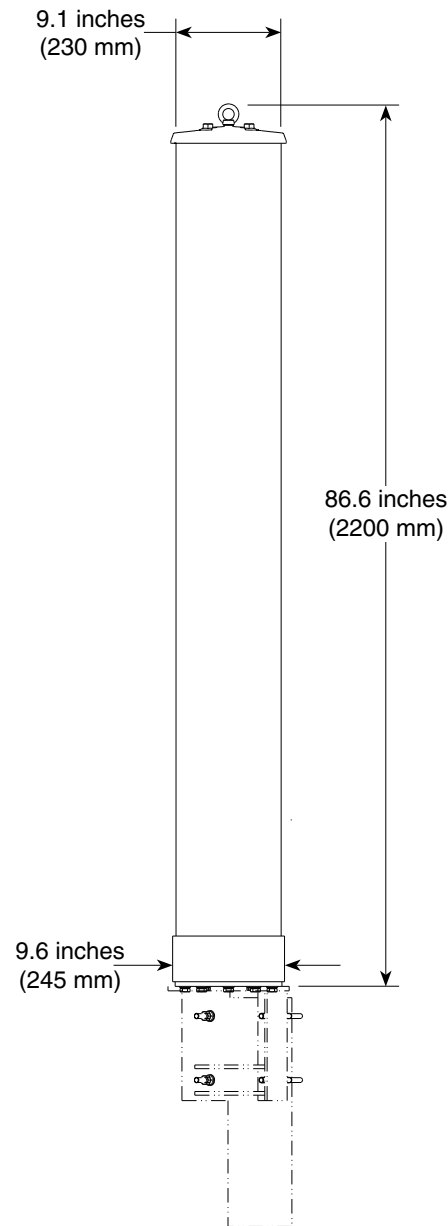
Horizontal Radiation Pattern



Vertical Radiation Pattern



11384-FRO  
936.A2807



**Order Information:**

Model	Description
750 10272	Antenna with 7-16 DIN connector

All specifications are subject to change without notice. The latest specifications are available at [www.kathrein-scala.com](http://www.kathrein-scala.com).