

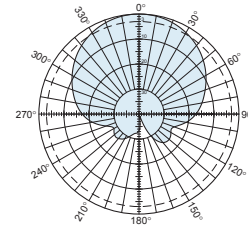
Kathrein panels for PCS feature:

- Heavy-duty construction using the highest quality materials: UV resistant pulltruded fiberglass radomes, stainless steel fasteners and hardware, rigid aluminum reflectors, and low loss coaxial cable power divider harness, all contributing to long, trouble free service life.
- Superior electrical specifications including low VSWR, wide bandwidth, flat frequency response, and superb intermodulation performance.
- Precision continuously adjustable electrical downtilt controls, manual control as standard equipment, with remote control available as an option.

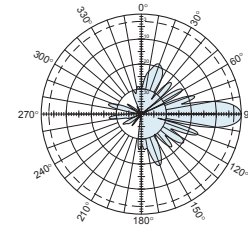
General specifications:

Frequency range	1710–2170 MHz
Impedance	50 ohms
VSWR	< 1.4:1
Intermodulation (2x20w)	IM3: <-150 dBc
Polarization	+45° and -45°
Maximum input power	300 watts per input (at 50°C)
Connector	2 x 7-16 DIN female
Isolation	>30 dB
Cross polar ratio	
Main direction 0°	25 dB (typical)
Sector ±60°	>10 dB
Tracking, average	0.5 dB
Squint	±1.5°
Weight	9.9 lb (4.5 kg)
Dimensions	28.9 x 6.1 x 2.7 inches (735 x 155 x 69 mm)
Wind load	at 93 mph (150kph)
Front/Side/Rear	42 lbf / 15 lbf / 50 lbf (185 N) / (65 N) / (220 N)
Mounting category	L (Light)
Wind survival rating*	120 mph (200 kph)
Shipping dimensions	39.4 x 6.8 x 3.7 inches (1000 x 172 x 95 mm)
Mounting	Band clamps for 1.8 to 4.9 inch (45 to 115 mm) OD masts are included. Tilt mount kits are available for the supplied clamps.

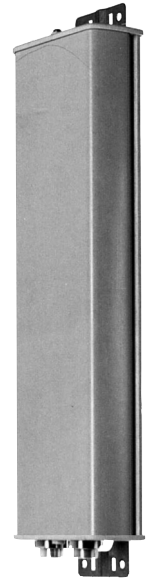
See reverse for order information.



Horizontal pattern
±45°-polarization



Vertical pattern
±45°-polarization

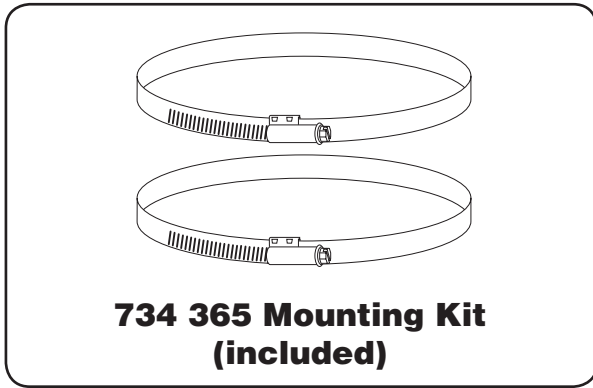


Specifications:	1710–1880 MHz	1850–1990 MHz	1920–2170 MHz
Gain	15.3 dBi	15.6 dBi	15.8 dBi
Front-to-back ratio (180° ± 30°)	>30 dB (co-polar) >25 dB (total power)	>30 dB (co-polar) >25 dB (total power)	>30 dB (co-polar) >25 dB (total power)
+45° and -45° polarization horizontal beamwidth	67° (half-power)	66° (half-power)	64° (half-power)
+45° and -45° polarization vertical beamwidth	12.6° (half-power)	11.8° (half-power)	11° (half-power)
Sidelobe suppression for first sidelobe above horizon	>14 dB	>16 dB	>14 dB

* Mechanical design is based on environmental conditions as stipulated in TIA-222-G-2 (December 2009) and/or ETS 300 019-1-4 which include the static mechanical load imposed on an antenna by wind at maximum velocity. See the Engineering Section of the catalog for further details.

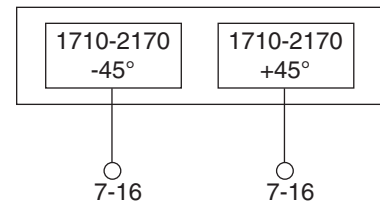
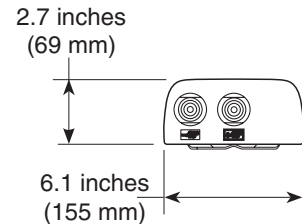
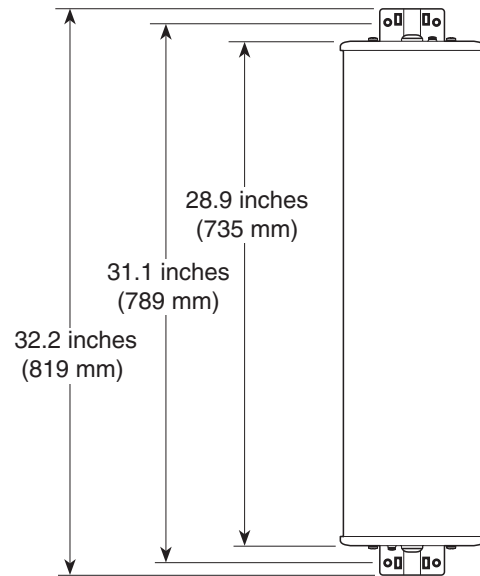


11287-A
936.3968/a



Mounting Options:

Model	Description
734 365 (included)	Mounting Kit for 1.8 to 4.9 inch (45 to 125 mm) OD mast.
2 x 738 546	Mounting Kit for 2 to 4.6 inch (50 to 115 mm) OD mast. 4.4 lb (2 kg)
850 10013	Tilt Mount Kit 0–50 degrees downtilt angle. 7.4 lb (3.7 kg) (requires 2 x 738 546 mounting kit)



Order Information:

Model	Description
742 196V01	Antenna with 7-16 DIN connectors

All specifications are subject to change without notice. The latest specifications are available at www.kathrein-scala.com.