

The 742 192 is a broadband log-periodic antenna designed for professional fixed-station applications. The radiating system is protected by a rugged fiberglass radome to assure reliable and stable operation in heavy icing conditions.

The 742 192 offers broadband frequency coverage with low VSWR and flat frequency response. The high front-to-back ratio and absence of sidelobes can help to minimize co-channel and adjacent channel interference problems at sites with congested spectrum.

**Specifications:**

Frequency range	806–2170 MHz (broadband)
Impedance	50 ohms
VSWR	< 1.5:1
Intermodulation (2x20w)	IM3: <-150 dBc
Polarization	Vertical
Connector	7-16 DIN female
Weight	12.6 lb (5.7 kg)
Dimensions	30.9 x 11.8 x 6.1 inches (785 x 300 x 155 mm)
Wind load Front/Side/Rear	at 93 mph (150kph) 5 lbf / 59 lbf / 7 lbf (20 N) / (260 N) / (30 N)
Wind survival rating*	120 mph (200 kph)
Shipping dimensions	39.37 x 14.2 x 6.9 inches (1000 x 360 x 175 mm)
Shipping weight	14.1 lb (6.4 kg)
Mounting	Hardware included for masts of 1.25 to 2.75 inch (30 to 70 mm) OD.

See reverse for order information.

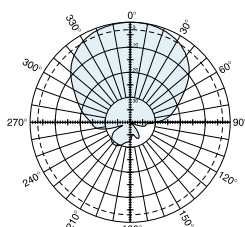


Specifications:	806–1000 MHz	1000–1700 MHz	1700–2170 MHz
Gain	11 dBi	11.3 dBi	11.5 dBi
Horizontal beamwidth	65° (halfpower)	55° (halfpower)	50° (halfpower)
Vertical beamwidth	55° (halfpower)	50° (halfpower)	45° (halfpower)
Front-to-back ratio	>25 dB	>25 dB	>23 dB
Maximum input power	300 watts (at 50°C)	250 watts (at 50°C)	200 watts (at 50°C)

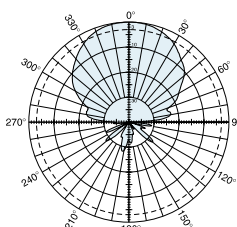
806–1000 MHz

1000–1710 MHz

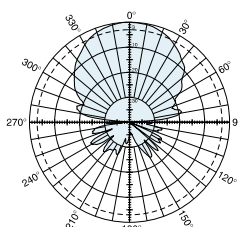
1710–2170 MHz



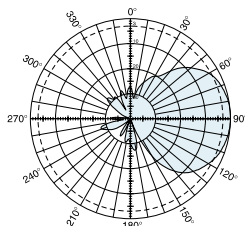
H-Plane  
Horizontal pattern  
Vertical - polarization



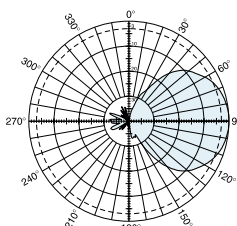
H-Plane  
Horizontal pattern  
Vertical - polarization



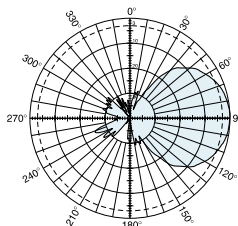
H-Plane  
Horizontal pattern  
Vertical - polarization



E-Plane  
Vertical pattern  
Vertical - polarization



E-Plane  
Vertical pattern  
Vertical - polarization

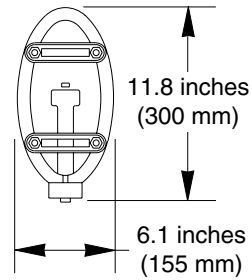
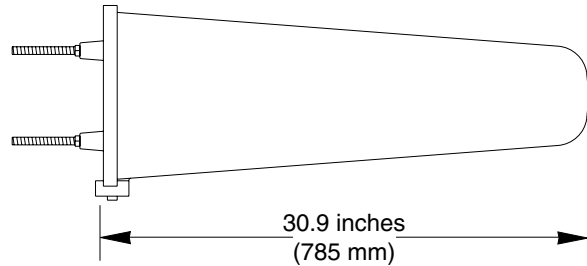
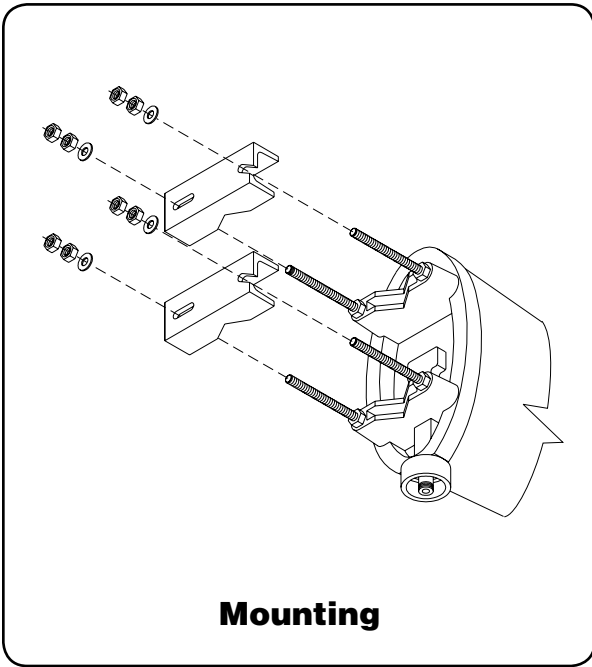


E-Plane  
Vertical pattern  
Vertical - polarization

\* Mechanical design is based on environmental conditions as stipulated in EIA-222-G (April 2007) and/or ETS 300 019-1-4 which include the static mechanical load imposed on an antenna by wind at maximum velocity. See the Engineering Section of the catalog for further details.



10716-D  
936.2134/b



**Order Information:**

Model	Description
742 192	Antenna with 7-16 DIN connector

All specifications are subject to change without notice. The latest specifications are available at [www.kathrein-scala.com](http://www.kathrein-scala.com).

Kathrein Inc., Scala Division Post Office Box 4580 Medford, OR 97501 (USA) Phone: (541) 779-6500 Fax: (541) 779-3991  
 Email: [communications@kathrein.com](mailto:communications@kathrein.com) Internet: [www.kathrein-scala.com](http://www.kathrein-scala.com)