

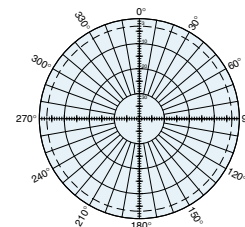
Omnidirectional Antenna
450–470 MHz

Specifications:

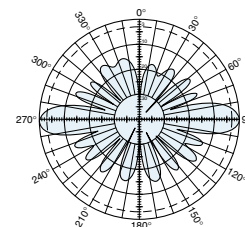
Frequency range	450–470 MHz
Gain	8.5 dBi
Impedance	50 ohms
VSWR	< 1.5:1
Intermodulation (2x20w)	IM3: <-150 dBc
Polarization	Vertical
Maximum input power	500 watts (at 50°C)
H-plane beamwidth	Omni
E-plane beamwidth	12 degrees (half-power)
Connector	7-16 DIN female
Weight	17.6 lb (8 kg)
Height	122.6 inches (3113 mm)
Radome diameter	2 inches (51 mm)
Wind survival rating	110 mph (180 kph)
Wind load	at 93 mph (150kph) 52 lbf / 230 N
Shipping dimensions	133 x 8.1 x 6 inches (3379 x 206 x 152 mm)
Shipping weight	35.3 lb (16 kg)
Mounting	For masts of 2 to 3.75 inch (50 to 94 mm) OD.

See reverse for order information.

* Mechanical design is based on environmental conditions as stipulated in TIA-222-G-2 (December 2009) and/or ETS 300 019-1-4 which include the static mechanical load imposed on an antenna by wind at maximum velocity. See the Engineering Section of the catalog for further details.



H-plane
Horizontal pattern
V-polarization

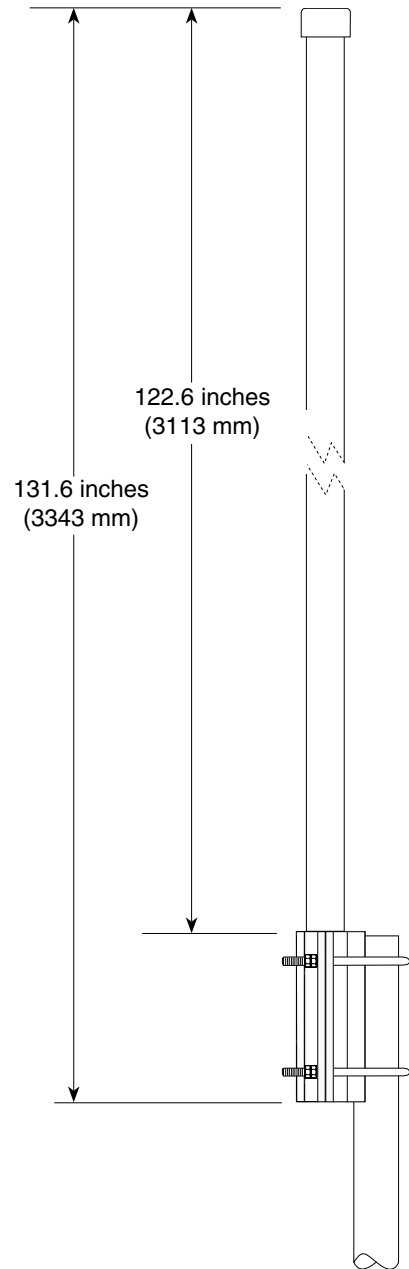
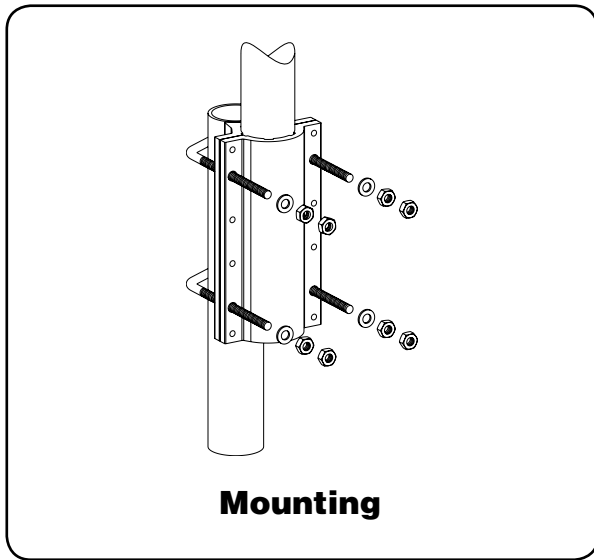


E-plane
Vertical pattern
V-polarization



10781-C
936.1947/b

Omnidirectional Antenna
450–470 MHz



Order Information:

Model	Description
742 155	Antenna with 7-16 DIN connector

All specifications are subject to change without notice. The latest specifications are available at www.kathrein-scala.com.

Kathrein Inc., Scala Division Post Office Box 4580 Medford, OR 97501 (USA) Phone: (541) 779-6500 Fax: (541) 779-3991
Email: communications@kathrein.com Internet: www.kathrein-scala.com